

A SELECTION FROM THE VAST RANGE OF

# Clarke®

**QUALITY PRODUCTS**

**AIR COMPRESSORS**

From DIY to industrial. Plus air tools, spray guns and accessories.

**GENERATORS**

Prime duty or emergency standby for business, home and leisure.

**POWER WASHERS**

Hot and cold, electric and engine driven - we have what you need.

**WELDERS**

Mig, Arc, Tig and Spot. From DIY to auto/industrial.

**METALWORKING**

Drills, grinders and saws for DIY and professional use.

**WOODWORKING**

Saws, sanders, lathes, mortisers and dust extraction.

**HYDRAULICS**

Cranes, body repair kits, transmission jacks for all types of workshop use.

**WATER PUMPS**

Submersible, electric and engine driven for DIY, agriculture and industry.

**POWER TOOLS**

Angle grinders, cordless drill sets, saws and sanders.

**STARTER/CHARGERS**

All sizes for car & commercial use.



# Clarke®

## CAR CREEPERS

MODEL Nos.

CMC36, CMC40, CMC45



Thank you for purchasing this CLARKE Car Creeper.

To ensure the creeper is assembled and used correctly, please read this leaflet and carefully follow all instructions. By doing so you can look forward to the seat giving you long and satisfactory service.

### Guarantee

This CLARKE product is guaranteed against faulty manufacture for a period of 12 months from the date of purchase. Please keep your receipt as proof of purchase. This guarantee is invalid if the product is found to have been abused or tampered with in any way, or not used for the purpose for which it was intended.

Faulty goods should be returned to their place of purchase, no product can be returned to us without prior permission. This guarantee does not effect your statutory rights.

**Clarke INTERNATIONAL**

For spare parts and servicing, please contact your nearest dealer, or Clarke International on

**020 - 8988 - 7400**

e-mail: [Parts@clarkeinternational.com](mailto:Parts@clarkeinternational.com) e-mail: [Service@clarkeinternational.com](mailto:Service@clarkeinternational.com)

**Hemnal Street, Epping, Essex CM16 4LG**

## Unpacking and Assembly

Unpack and lay out all components, checking for any damage which may have occurred during transit, and ensuring that all parts are accounted for by checking against the parts list. Should there be any deficiency or damage, please contact your Clarke dealer immediately.

## Assembly Ref: Parts diagram

It is only necessary to attach the castors to your creeper, by threading each one through the hole in the base frame and securing with the hex socket head Barrel Nuts with washers provided.

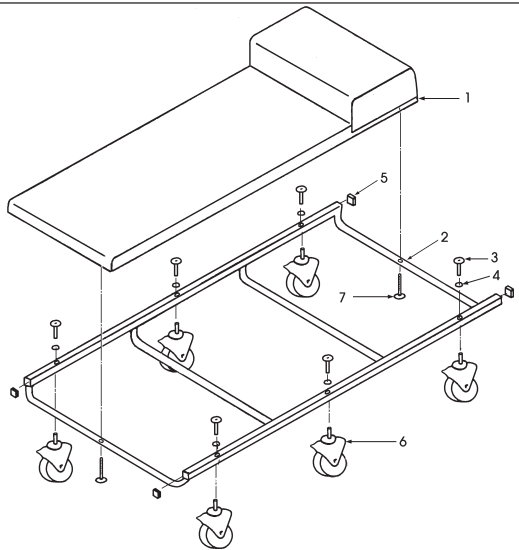
## Do's and Dont' s

- **DO NOT** use on rough uneven surfaces and ensure that the floor surface is hard enough so that the castors do not sink in.
- **DO NOT** use the seat to transport heavy objects.
- **DO NOT** use the seat as a stand.
- **DO NOT** leave the seat where it may be accidentally trodden on as this could have serious consequences, particularly in a workshop environment.
- If a castor should fail or become damaged in some way, have it replaced immediately. Should it be ignored, the additional stresses placed on the other three castors could quickly cause them to fail also.
- **DO NOT** exceed maximum load - 150kg

### CMC36

Part No. 7630187

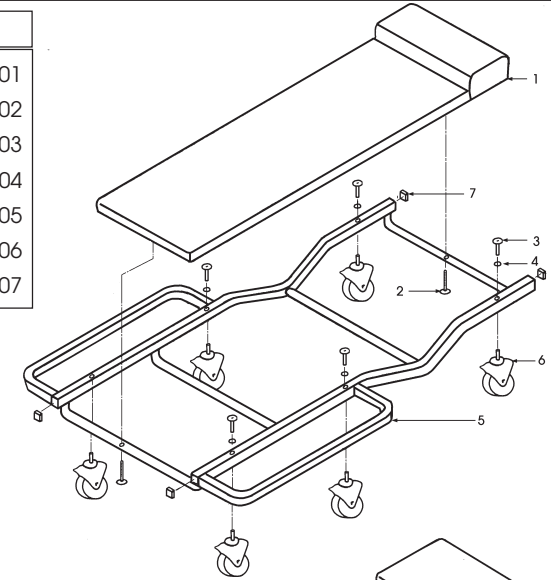
No.	Description	Qty	Part No.
1.	Seat Cushion	1	SNCMC3601
2.	Base Frame	1	SNCMC3602
3.	Barrel Nut	6	SNCMC3603
4.	Spring Washer	6	SNCMC3604
5.	Pladstic Cap	4	SNCMC3605
6.	Caster	6	SNCMC3606
7.	Screw	2	SNCMC3607



No.	Description	Qty	Part No.
1.	Seat Cushion	1	SNCMC4001
2.	Screw	2	SNCMC4002
3.	Barrel Nut	6	SNCMC4003
4.	Spring Washer	6	SNCMC4004
5.	Base Frame	1	SNCMC4005
6.	Caster	6	SNCMC4006
7.	Plastic cap	4	SNCMC4007

### CMC 40

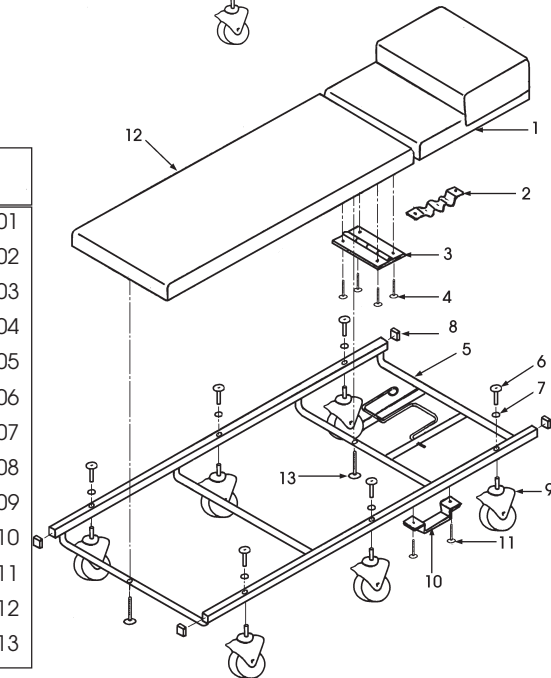
Part No. 7630189



### CMC 45

Part No. 7630188

No.	Description	Qty	Part No.
1.	Head Rest	1	SNCMC4501
2.	Rack Platet	1	SNCMC4502
3.	Hinge	1	SNCMC4503
4.	Bolt	4	SNCMC4504
5.	Base frame	1	SNCMC4505
6.	Barrel Nut	6	SNCMC4506
7.	Spring Washer	6	SNCMC4507
8.	Plastic Cap	4	SNCMC4508
9.	Caster	6	SNCMC4509
10.	Conn. Plate	1	SNCMC4510
11.	Bolt	2	SNCMC4511
12.	Cushion	1	SNCMC4512
13.	Screw	2	SNCMC4513



For Spare Parts and Service, please contact your nearest dealer, or CLARKE International, on one of the following numbers.

**PARTS & SERVICE TEL: 020 8988 7400**  
**PARTS & SERVICE FAX: 020 8558 3622**